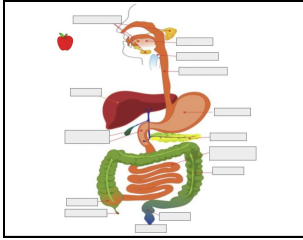
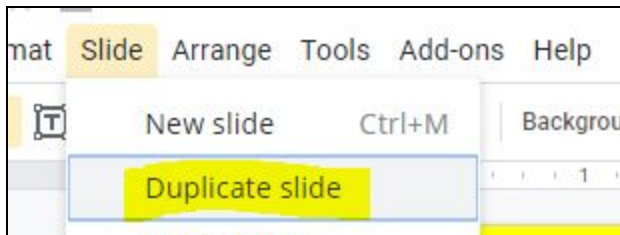


Student Instructions

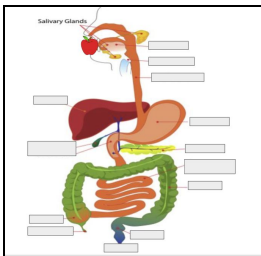
1. Make a copy of the [Digestive System Starter Slides](#).
2. Choose a food you want to digest from the 3rd slide. Copy it to the next slide of the animation near the mouth and then delete the first three slides.



3. Duplicate the slide and then move the food a little toward the mouth and then duplicate the slide. Repeat moving the food a little and duplicating slides until the food travels all the way through the digestive system (this should take a minimum of 100 slides).

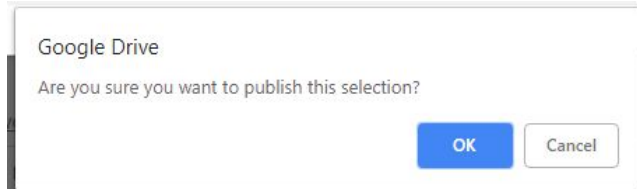
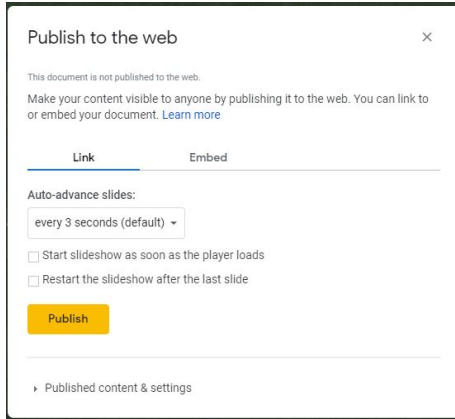


4. Uncover the parts of the digestive system as the food passes through them by deleting the white shape that covers the name of the organ.

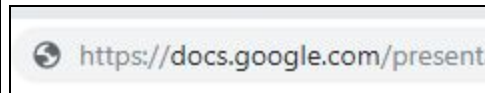
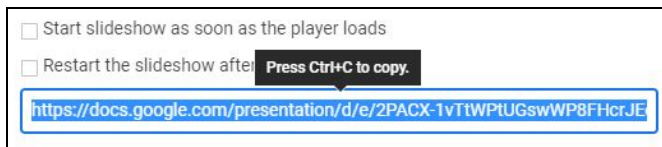


5. You can also change the shape of the food to represent how the digestive system changes the food. For example, you can break food into parts in the mouth or represent it as a liquid in the small intestines.
6. Once you've created all of your slides you'll publish the slides to the web so other people can see it. It will take 10 slides for one second of animation so you will need 100 slides for 10 seconds of animation. File → Publish to the web...

Student Instructions



7. Copy the URL (Control + C), open a new tab, and paste the URL in the new tab (Control + V)



8. The slideshow is set to run one slide every 3 seconds, which is much too slow for animation. We need each slide to last about 1/10 of a second. To do this we change the timing in the URL. Look for “delays=3000” in the URL. Change the 3000 to 100 and then click Enter.



9. To run the animation click the play button.